

Saint Paul Public Schools

Designing for 21st Century Learning



St. Anthony Park School Design Committee Workshop 2: Envisioning the Future



WELCOME!



CUNINGHAM
G R O U P



Envisioning the Future



CUNINGHAM
G R O U P



Recap

Workshop 1



CUNINGHAM
G R O U P

Facilities Master Plan



**“Plans are nothing;
planning is everything”**

-Dwight D. Eisenhower

- Provides roadmap for District to implement sustainable and responsive facility projects by:
 - Establishing district-wide baseline facility needs
 - Identifying facility gaps and inequities across district
 - Providing criteria to fulfill projects fairly and efficiently
 - Determining implementation priorities for construction projects



Facilities Master Plan - Planning Process

May – August 2014

May 2014 - December 2014

January – June 2015

June - December 2015

Steering Committee

Phase 1
Prepare to Inform



Data Collection and Evaluation

- Strong Schools, Strong Communities 2.0 (strategic plan)
- Enrollment and building capacities
- Demographic research
- Personalized Learning; Technology Plan
- Updated Educational Adequacy Assessment

Phase 2
Consult > Involve



Establish District-wide Priorities, Baseline and Criteria

- Determine large-scale system priorities
- Audit each site facility gaps/needs (baseline)
- Determine facility improvement prioritization criteria
- Estimate improvements costs
- Funding recommendations

Phase 3
Involve > Collaborate



Develop Site-based Priorities and Plans

- Site and floor plan improvements and modifications
- Prioritized phasing of projects
- Estimated improvements costs
- Determine district's facilities governance committee structure

Phase 4
Inform



Finalize Plan and Share Results

- Inform stakeholders
- Convene district facilities governance committee
- Board of Education presentation

Facilities Master Plan Committee

Collaborate

Inform

School Design Committee

Responsible for shaping the work at **St. Anthony Elementary School**. Includes all stakeholders.

School Steering Committee

Responsible for guiding the overall process at St. Anthony Park. Includes: the principal, district academic and facilities leadership, building engineer, staff member.



DESIGN WITH, NOT FOR

Welcome to the design team!



Highest Hope Wordle



CUNNINGHAM GROUP





**WORKSHOP
1**

GOAL

To orient the School Design Committee to their charge and the framework of the FMP to date including the Facilities Vision, Principles, Standards and the priorities and project scope identified for St. Anthony Park Elementary School.

ACTIVITIES

- Introduction to process and conceptual scope
- Small Group work on what's special about St. Anthony Park Elementary School



**WORKSHOP
2**

April 18
5:30-7:30

GOAL

To provide and explore examples of what learning environments could look like to support 21st century learning.

ACTIVITIES

- Introduction to what others are doing
- How do facilities impact learning?
- Small Group work



**WORKSHOP
3**

MAY 2
5:30-7:30

GOAL

Program and adjacency exploration/validation

ACTIVITIES

- Review of space, program and what's included
- Design thinking hands-on exercise
- Report back and next steps



**WORKSHOP
4**

May 16
5:30-7:30

GOAL

Conceptual Design Validation

ACTIVITIES

- Report back outcomes of Workshop 3
- Synthesis: Presentation of conceptual design
- Small Group discussion
- Report back and next steps

21st CENTURY & BEYOND



“If you’re not prepared to be wrong, you’ll never come up with anything original.”

– SIR KEN ROBINSON

FORCES OF CHANGE



LIMITING BELIEFS



INNOVATION ECONOMY



Day in the Life

FORCES OF CHANGE:

Please identify the major forces of change that you believe will impact public education over the next 10 years.

Please add your thoughts to the scroll

**Predicting the future is hard,
it hasn't happened yet.**

Yogi Berra

PRECONCEPTIONS: **{i.e. limiting beliefs}**

Identify personal and/or institutional beliefs that might prevent or limit you in facing the challenges presented by these forces.





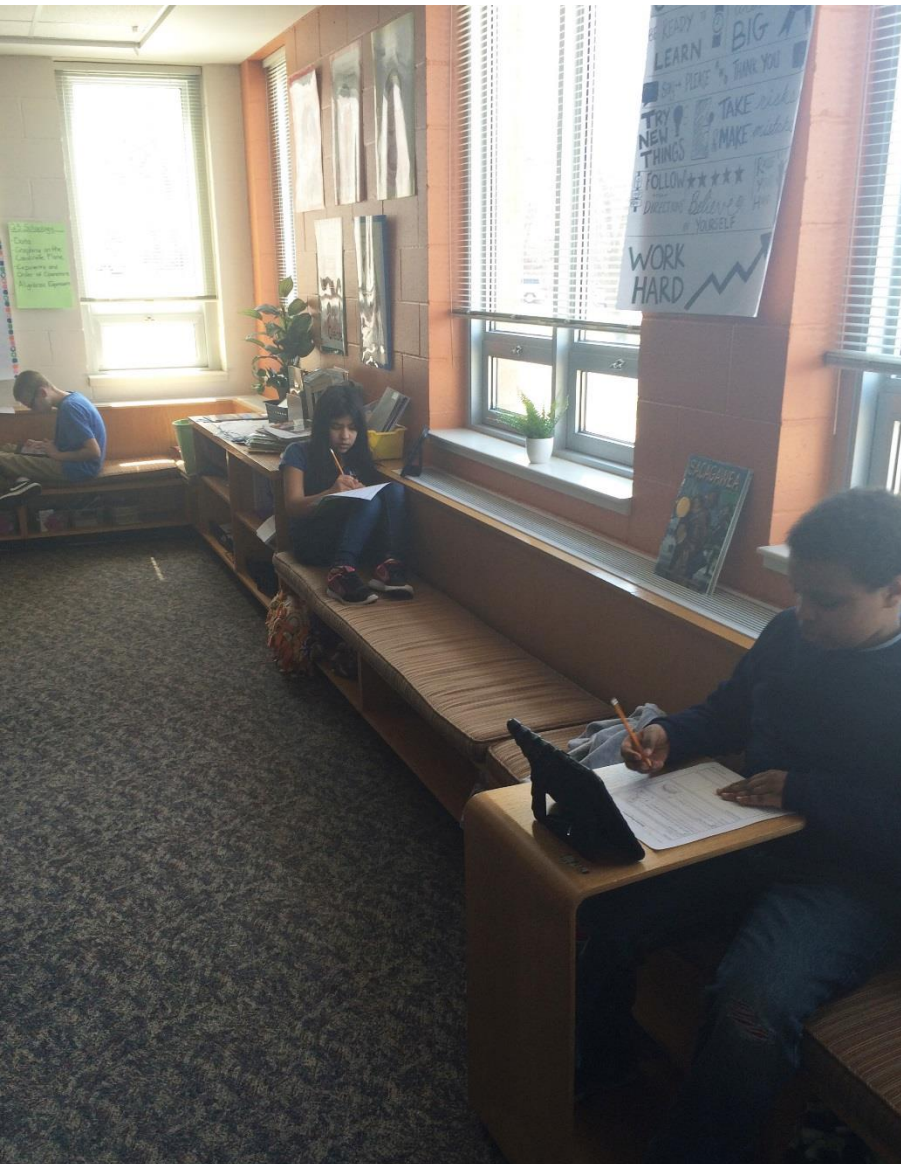
North Park Elementary – School Tour



North Park Elementary – School Tour



North Park Elementary – School Tour



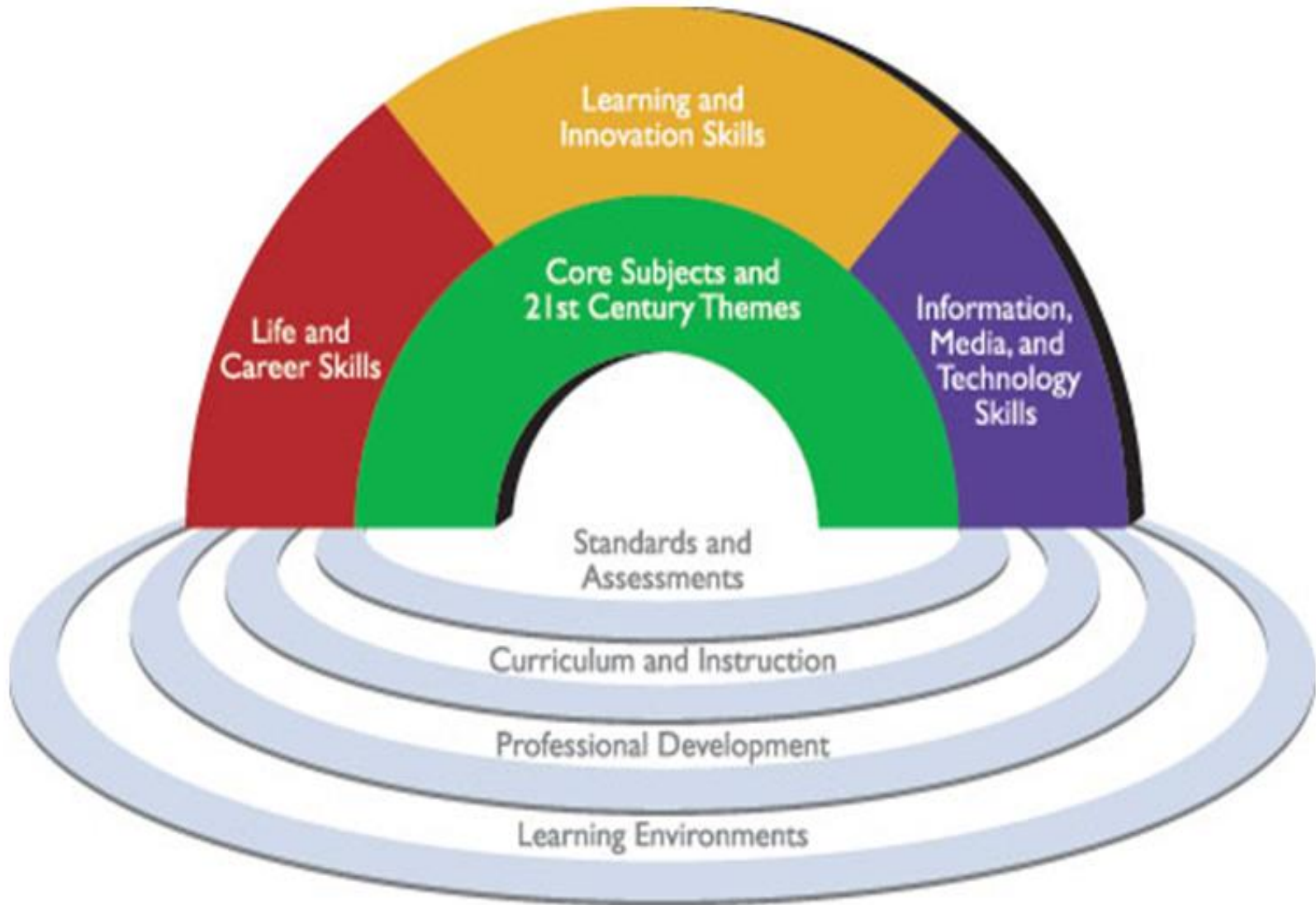


21st Century Skills

- Critical thinking
- Creativity
- Collaboration
- Communication

Partnership for 21st Century Learning

<http://www.p21.org/>



Educational TRENDS

- **Learning is Personal** – mass customization of learning
- **Learning Happens Everywhere** – formal and informal
- **Flexibility and Adaptability** – of both space and furniture
- **Collaboration** – students need to see adults model working together
- **Project Based Learning** – relevant, engaging
- **Technology** – seamless, ubiquitous, BYOD

learning is
PERSONAL



Dunn and Dunn Learning Style Model

Designed By Dr. Rita Dunn and Dr. Kenneth Dunn

Graphic Design by Susan M. Rundle

STIMULI

ELEMENTS

Environmental

Sound



Light



Temperature



Seating



Emotional

Motivation



Responsibility/
Conformity



Task
Persistence



Structure



Sociological

Self



Pair



Peers



Team



Adult



Variety



Physiological

Perceptual



Intake



Time of Day



Mobility



Psychological

Analytic



Global



Reflective



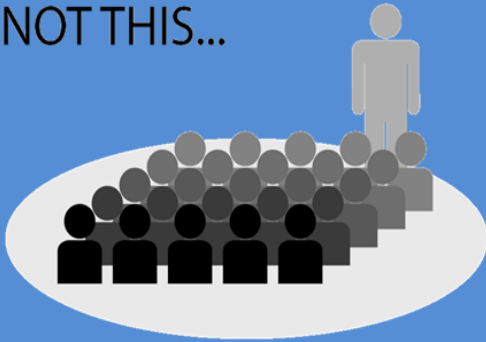
Impulsive





School of ONE
New York City, NY

NOT THIS...

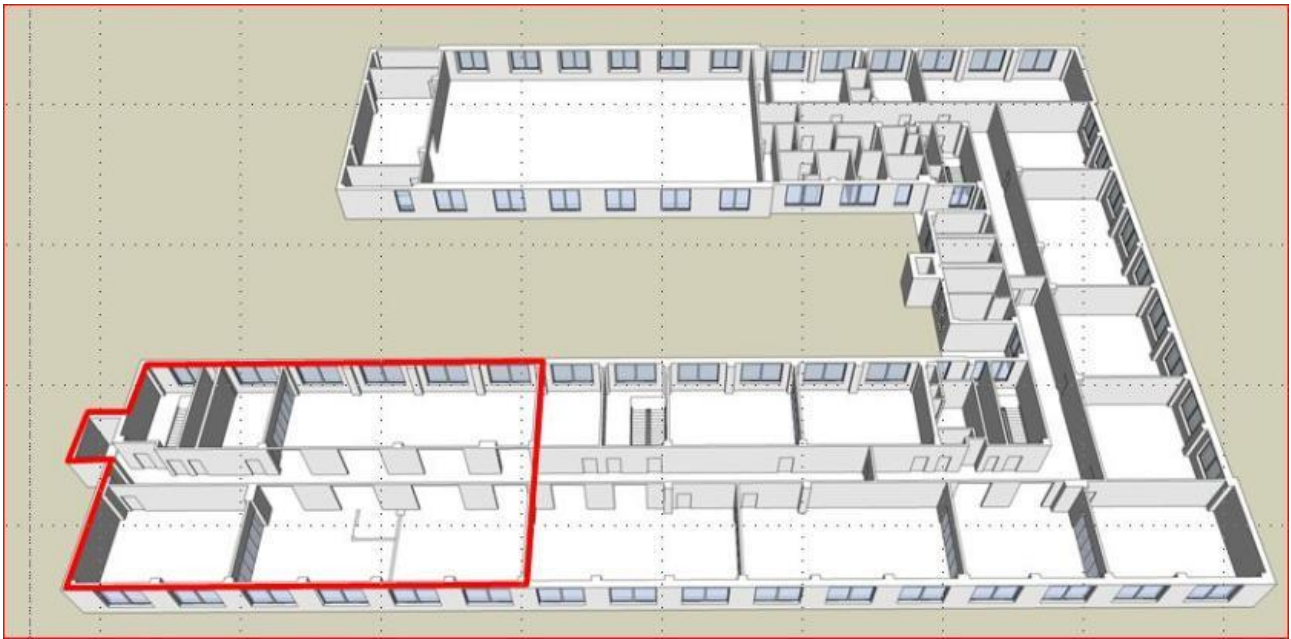


THIS...



SCHOOL OF ONE





learning happens
EVERYWHERE



FAIR School Downtown
Minneapolis, MN

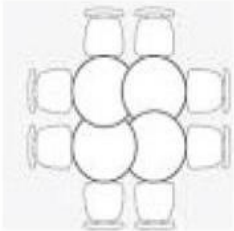


North Park Elementary
Colombia Heights, MN



flexibility and ADAPTABILITY

learning studios



We believe in forming spaces that **form ideas.**



Variety of spaces for **all learning styles.**



Creating your unique

kit of parts.





Surfaces that are **multifunctional**.

small group



Vertical display surfaces encourage **ideation and interaction**.



Designed to support information sharing
—whether it's an individual or a group of peers conversing

CLUBHOUSE. 





Alexandria Area High School

Alexandria Public Schools, Alexandria MN



Alexandria Area High School

Alexandria Public Schools, Alexandria MN



Alexandria Area High School
Alexandria Public Schools, Alexandria MN

COLLABORATION







FAIR School Downtown
Minneapolis, MN

project based LEARNING



It is the tension between
creativity and skepticism that
has produced the stunning and
unexpected findings in science. Carl Sagan





TECHNOLOGY



CUNINGHAM
G R O U P





HOMWORK
HOMWORK

Homework Review

REFLECTIONS
REFLECTIONS

PROVOCATION:

North Park & Eastern Heights Videos

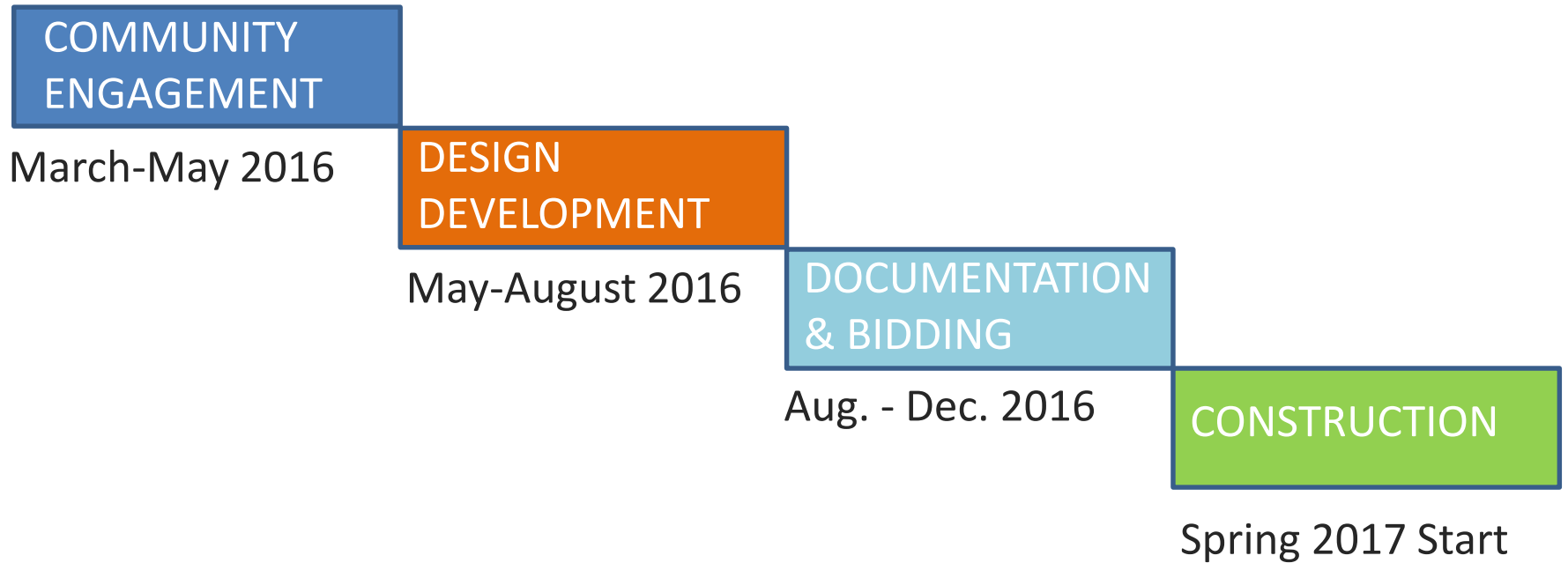
REFLECTIONS
REFLECTIONS

A DAY IN THE LIFE:

Imagine you are a student, teacher, parent, or community member...

- What does learning look like after this project is completed?**
- What are you doing, with whom, and where?**

SCHEDULE



Next Steps....

Where are we?

WORKSHOP 1

To orient the School Design Committee to their charge and the framework of the FMP to date including the Facilities Vision, Principles, Standards and the priorities and project scope identified for St. Anthony Park Elementary School.



ACTIVITIES

- Introduction to process and conceptual scope
- Small Group work on what's special about St. Anthony Park Elementary School

Envisioning the Future

WORKSHOP 2

April 18
5:30-7:30



GOAL

To provide and explore examples of what learning environments could look like to support 21st century learning.



ACTIVITIES

- Introduction to what others are doing
- How do facilities impact learning?
- Small Group work

What Do We Want?

WORKSHOP 3

MAY 2
5:30-7:30



GOAL

Program and adjacency exploration/validation



ACTIVITIES

- Review of space, program and what's included
- Design thinking hands-on exercise
- Report back and next steps

Synthesis & Design Validation

WORKSHOP 4

May 16
5:30-7:30



GOAL

Conceptual Design Validation



ACTIVITIES

- Report back outcomes of Workshop 3
- Synthesis: Presentation of conceptual design
- Small Group discussion
- Report back and next steps

Resources

External: Food for Thought videos
examples found on
www.pinterest.com/meg0239

Internal: <http://www.spps.org/fmp>



CUNINGHAM
G R O U P

REFLECTIONS



CUNINGHAM
G R O U P

